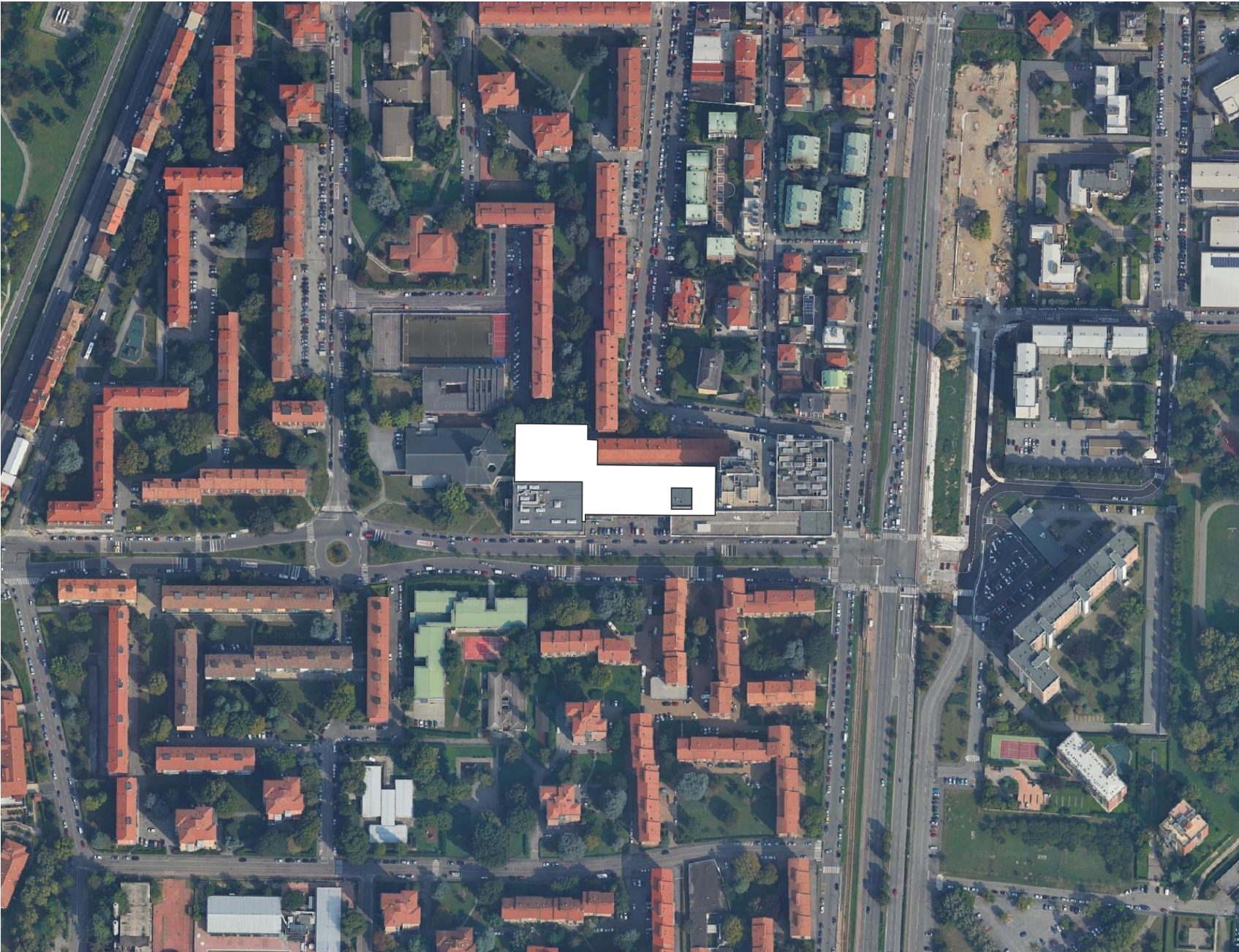


Le temperature de La Piana

Analisi microclimatica preliminare

Eugenio Morello
Nicola Colaninno
Erpinio Labrozzi

Laboratorio di Simulazione Urbana Fausto Curti
Politecnico di Milano, Dipartimento di Architettura e Studi Urbani



1. Compact high-rise



2. Compact midrise



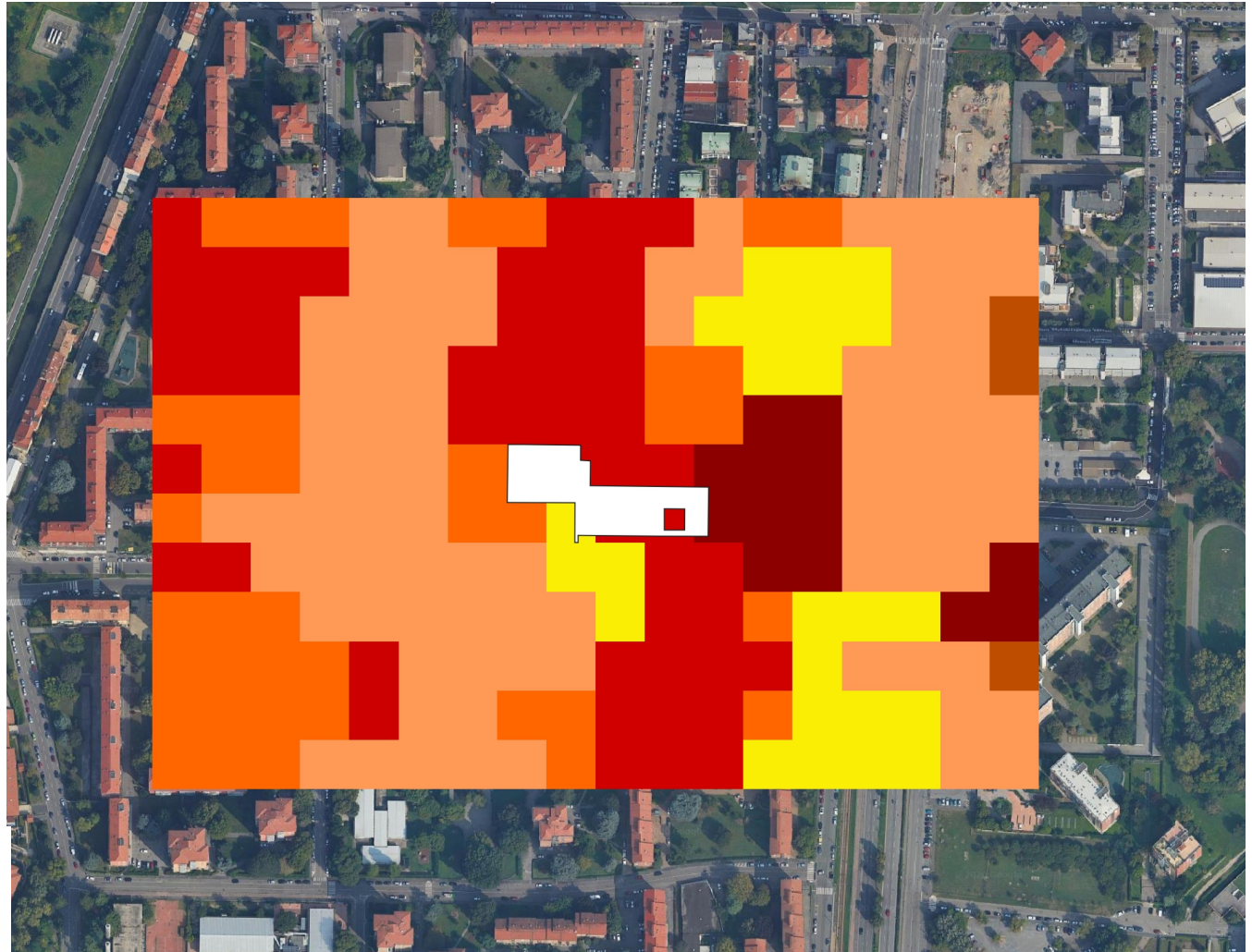
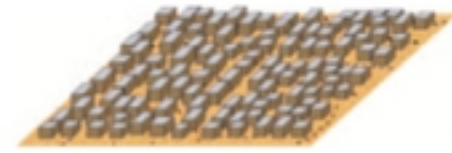
5. Open midrise

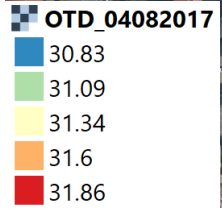
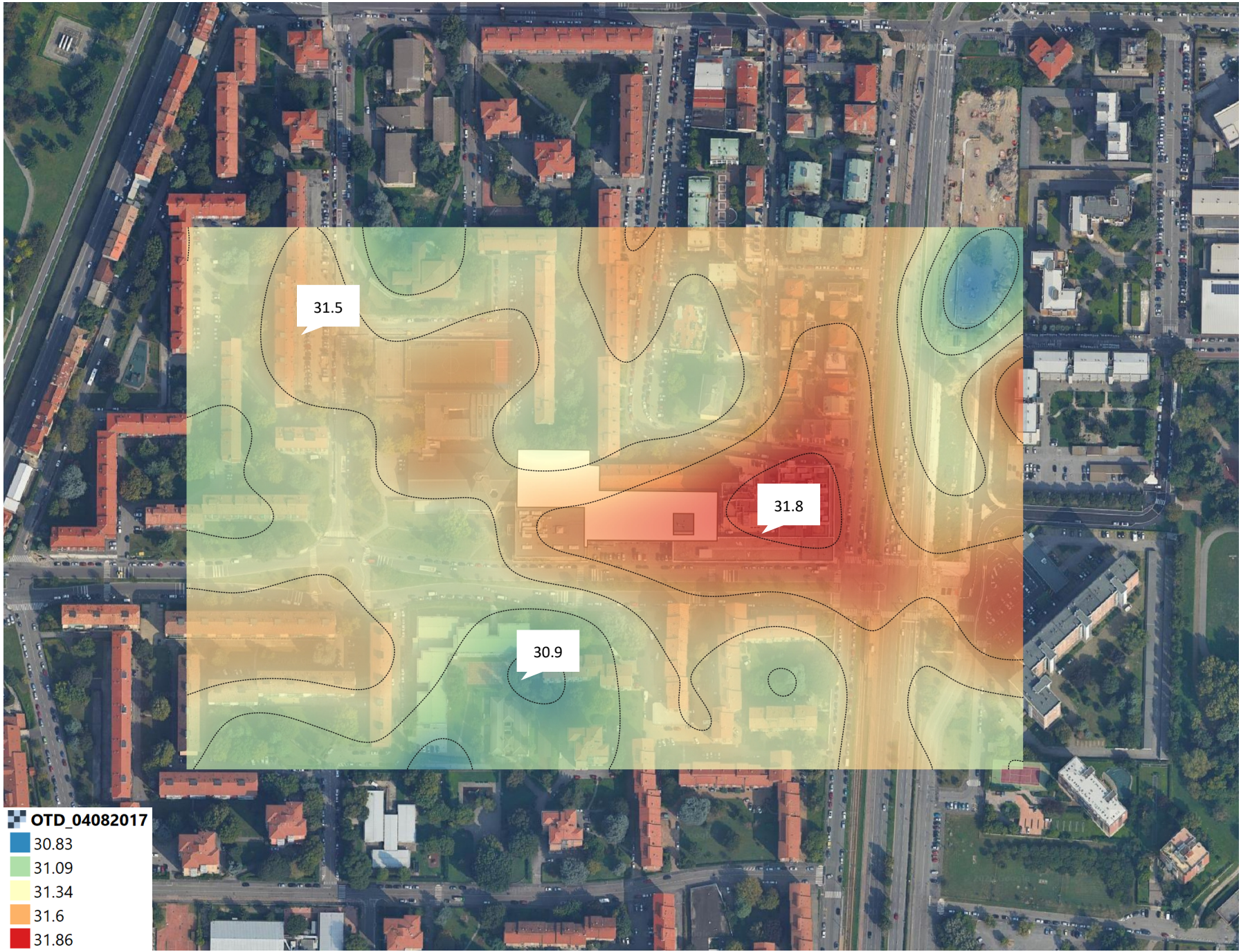


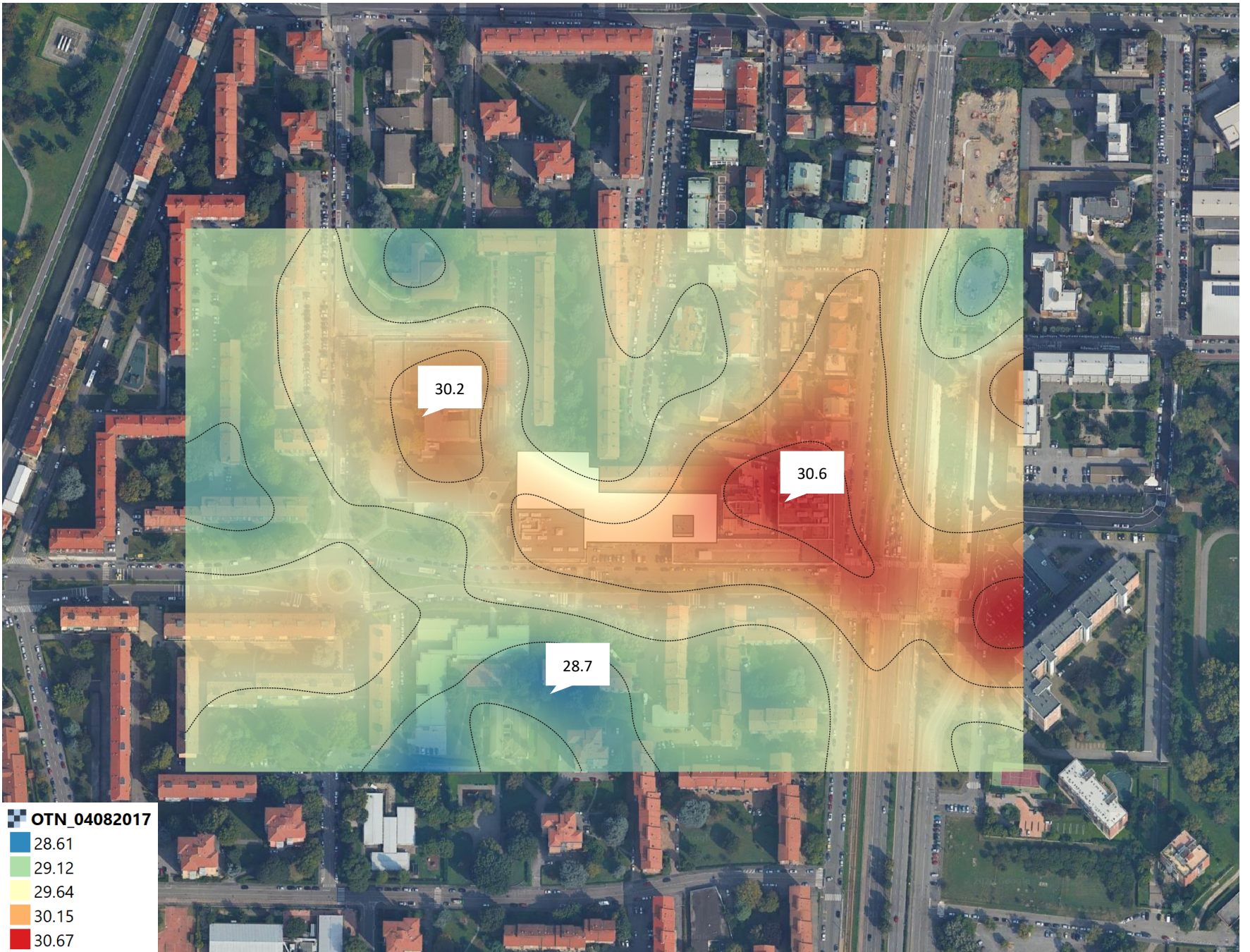
6. Open low-rise

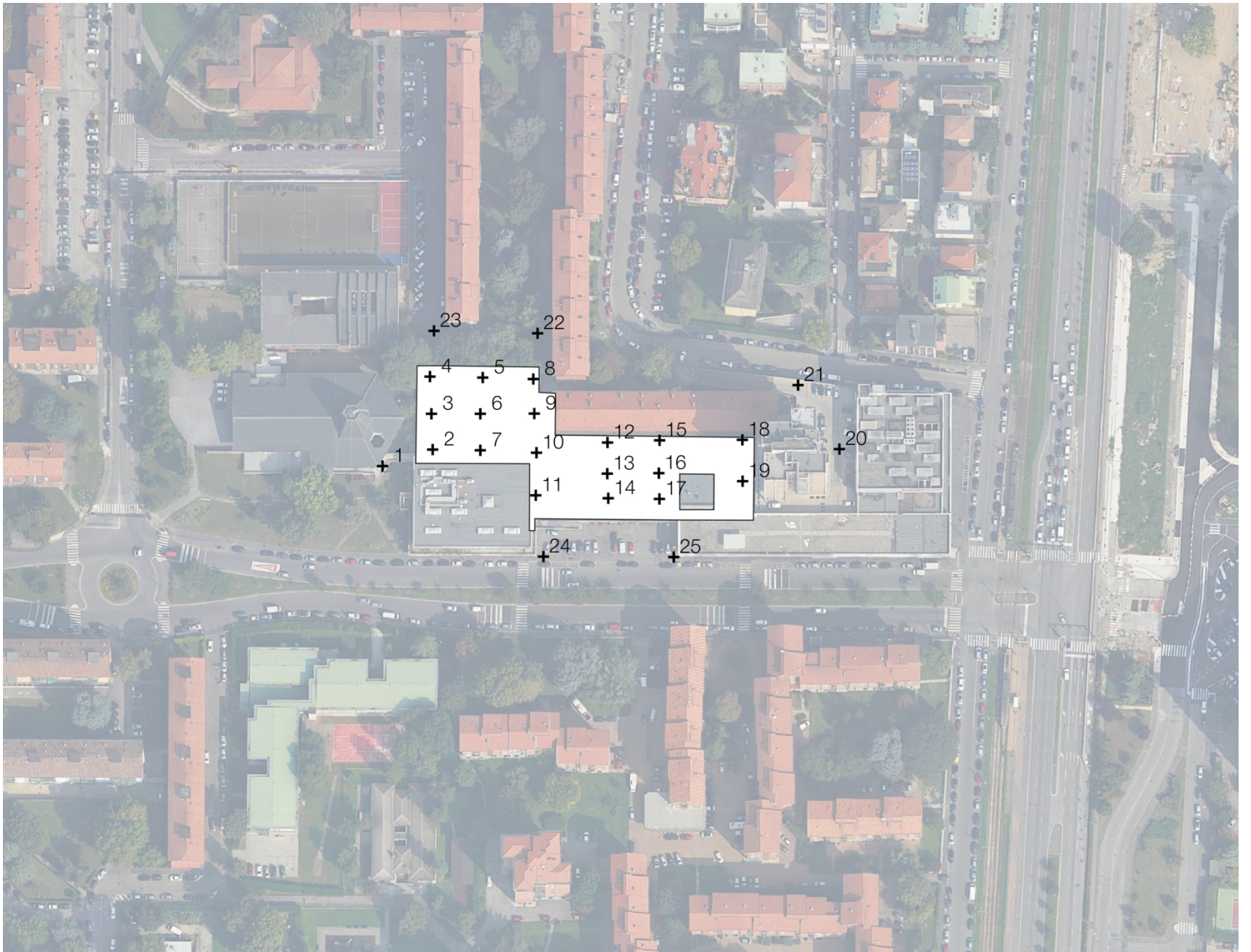


7. Lightweight low-rise



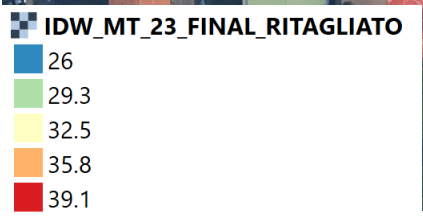
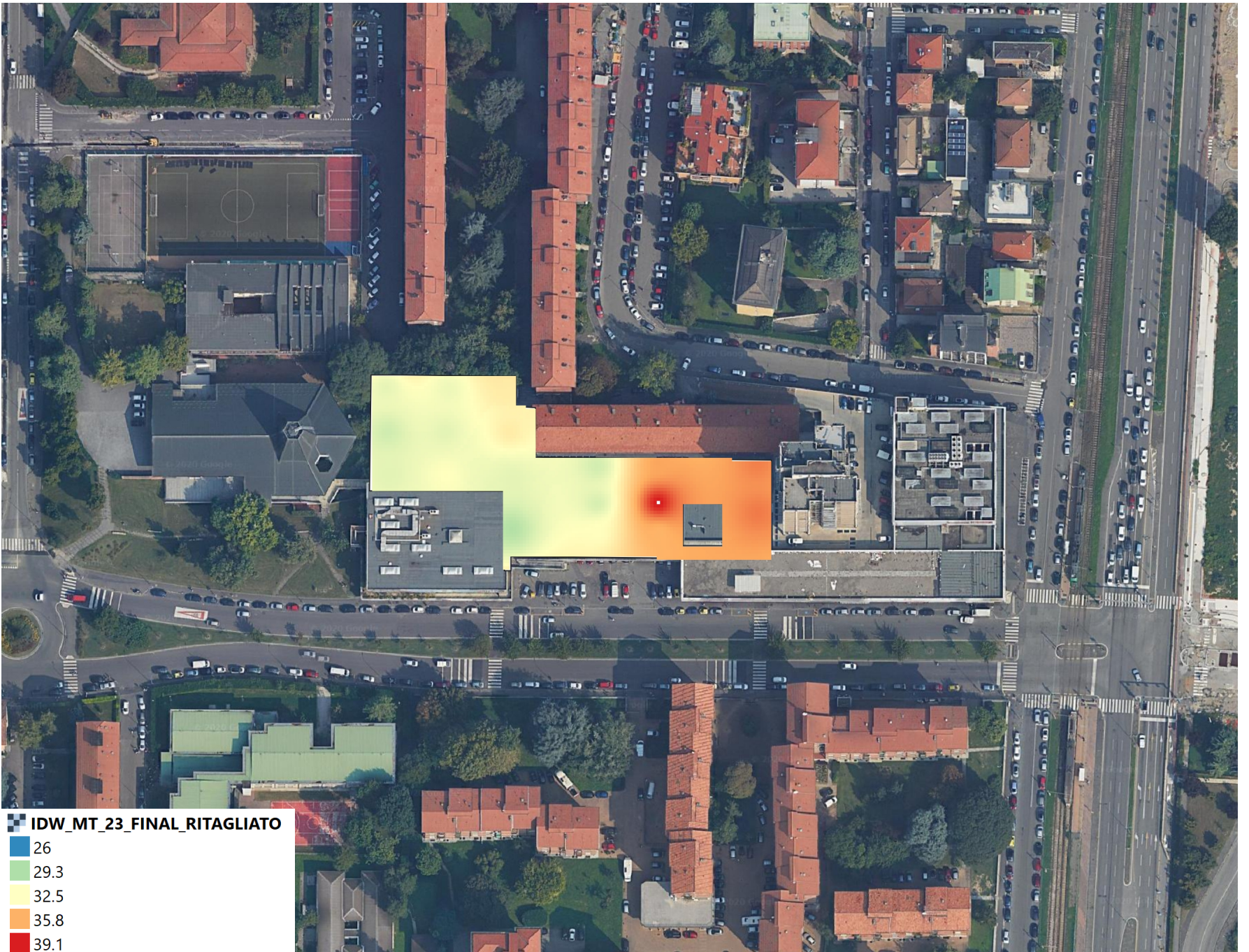


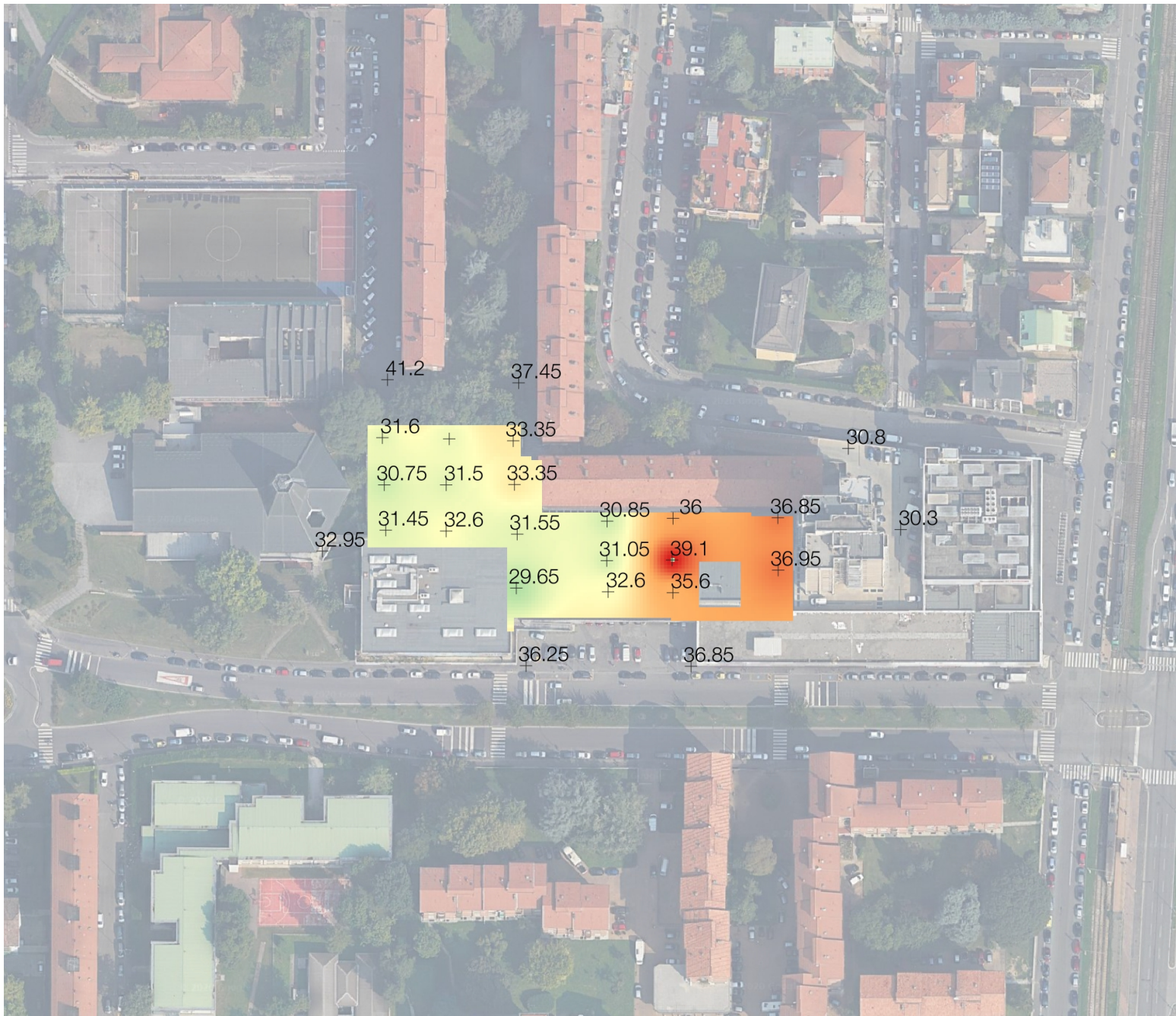


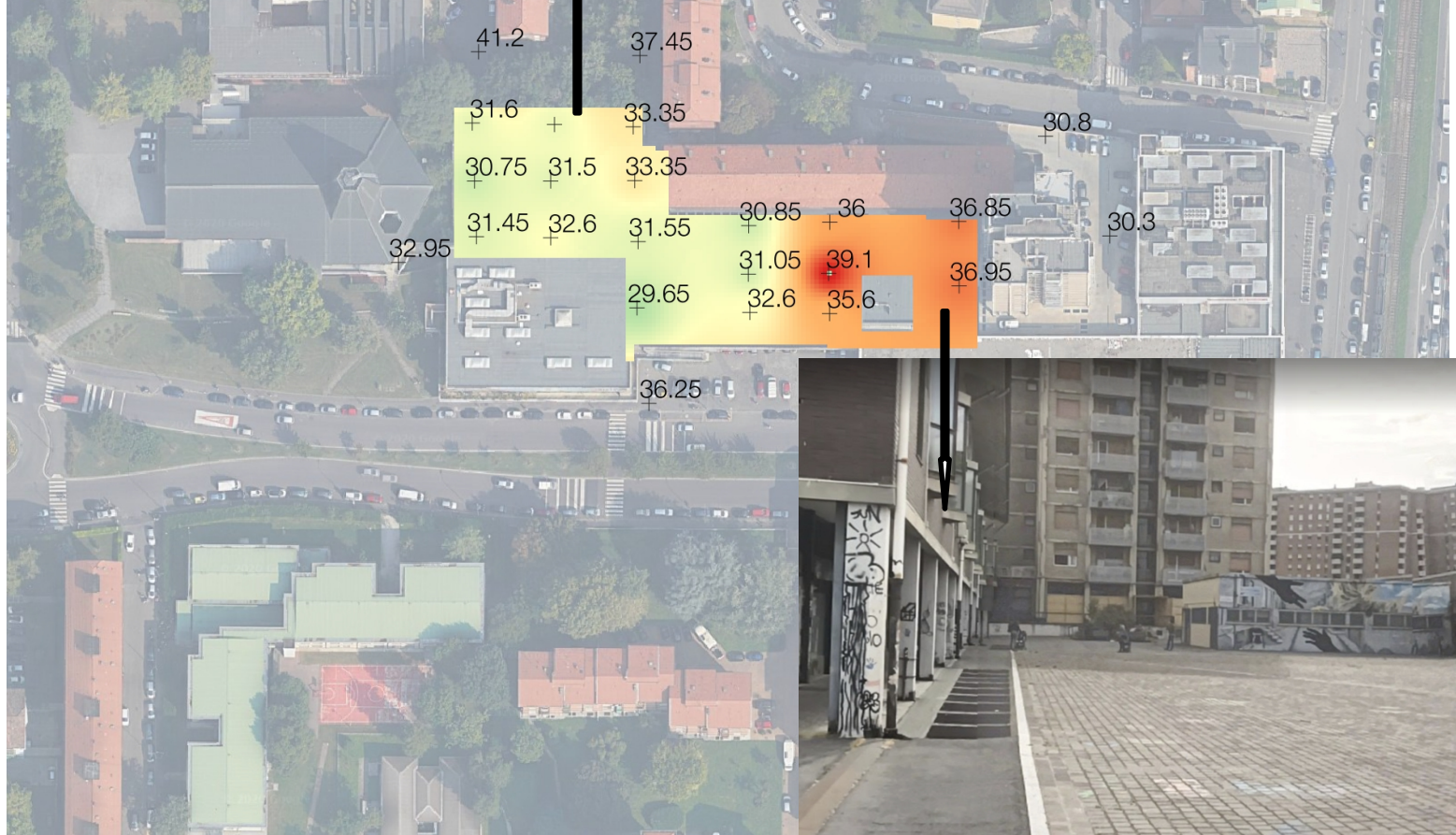
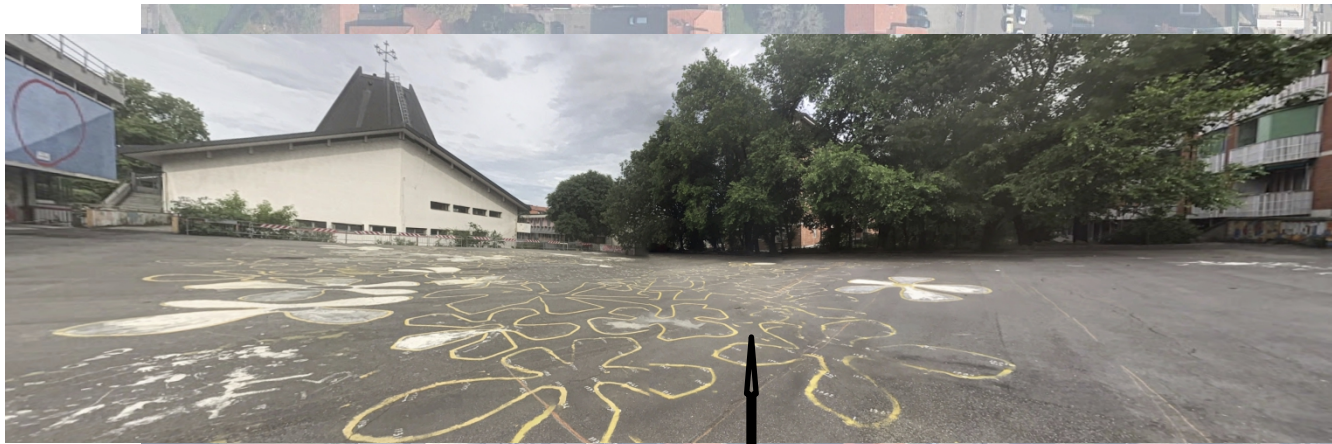


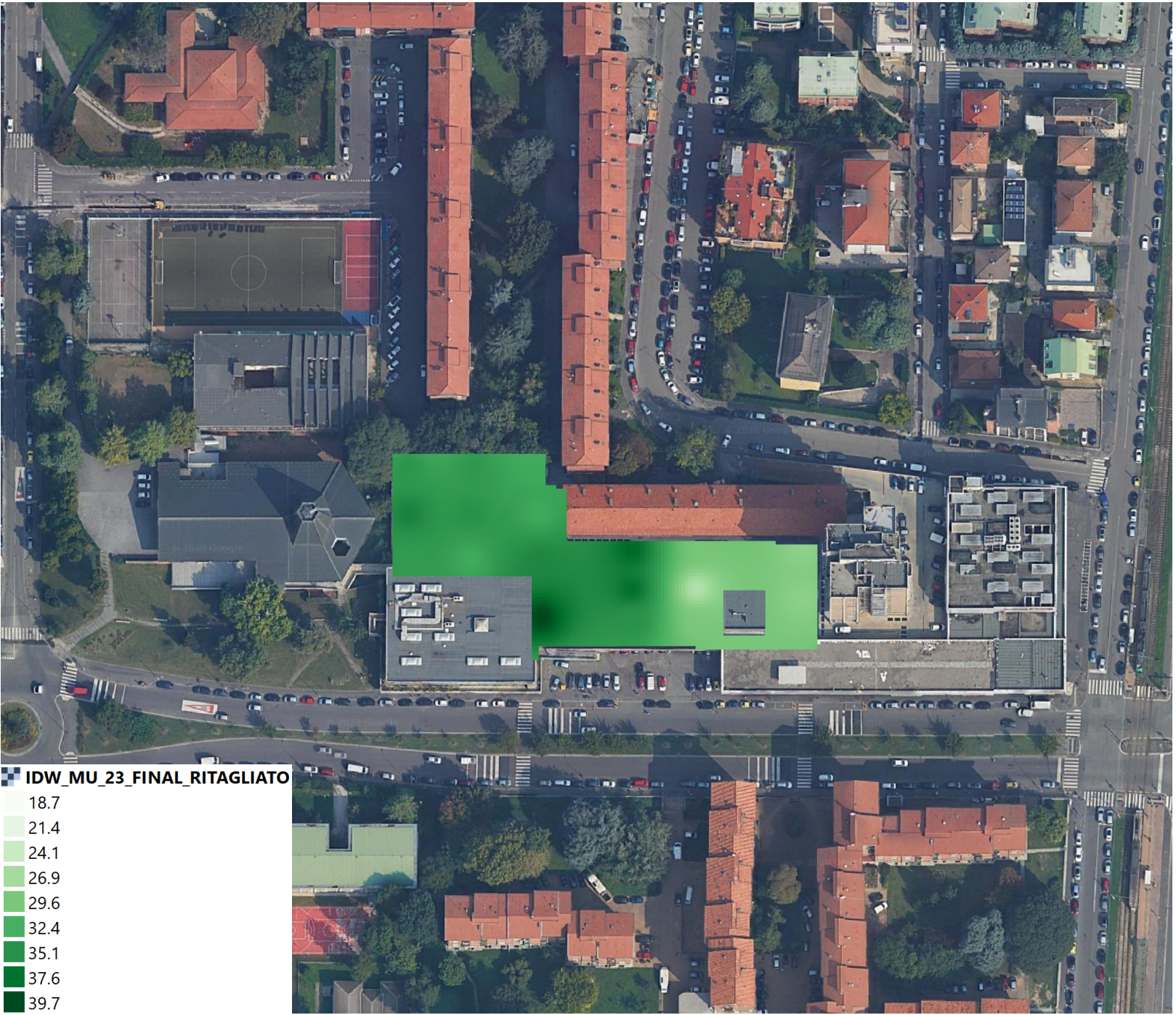


Ambient temperature instrument features		
Measuring range	Resolution	Accuracy
-10°C / +60°C	0.1 °C	± 1.5 °C



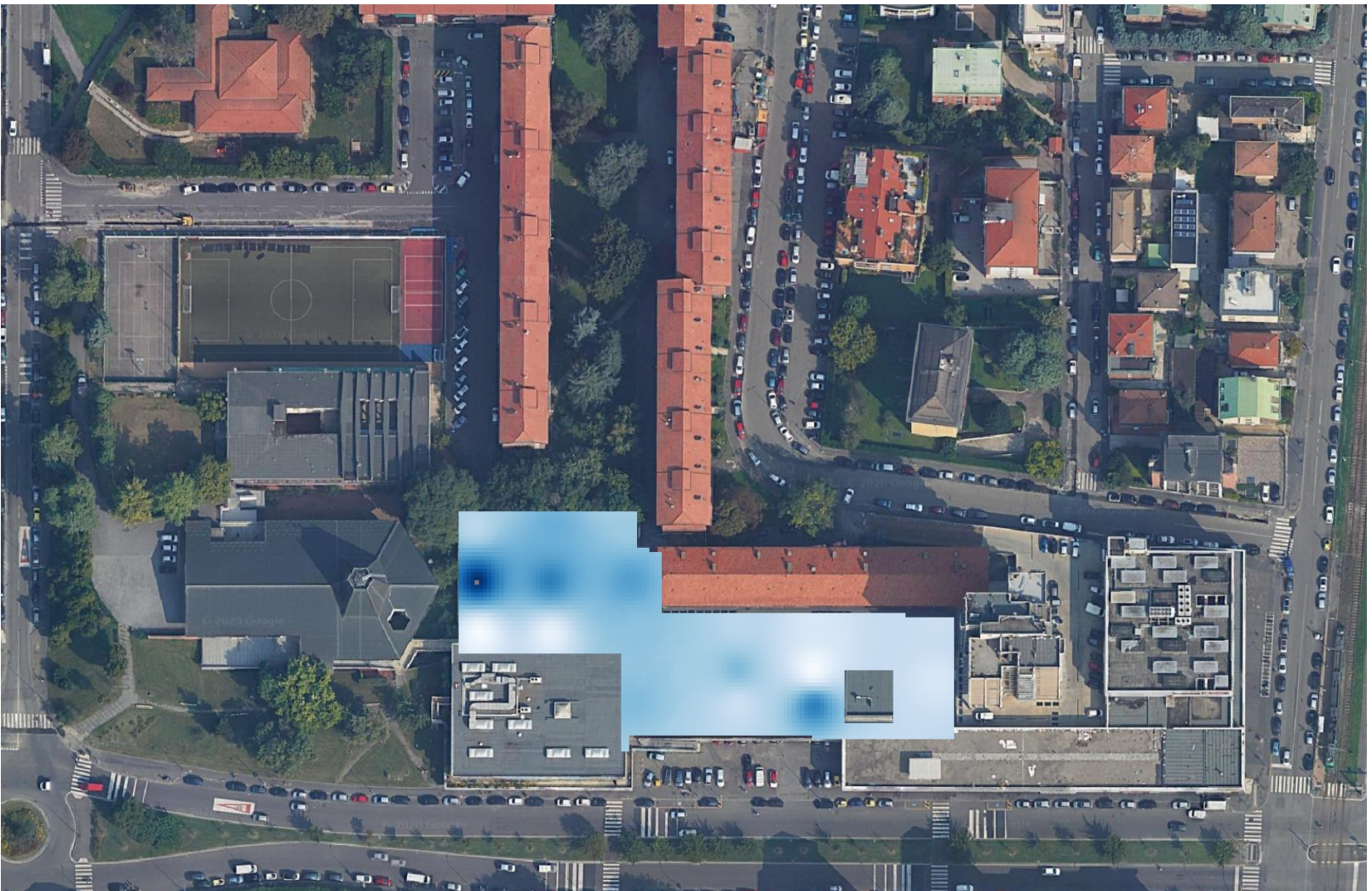






IDW_MU_23_FINAL_RITAGLIATO

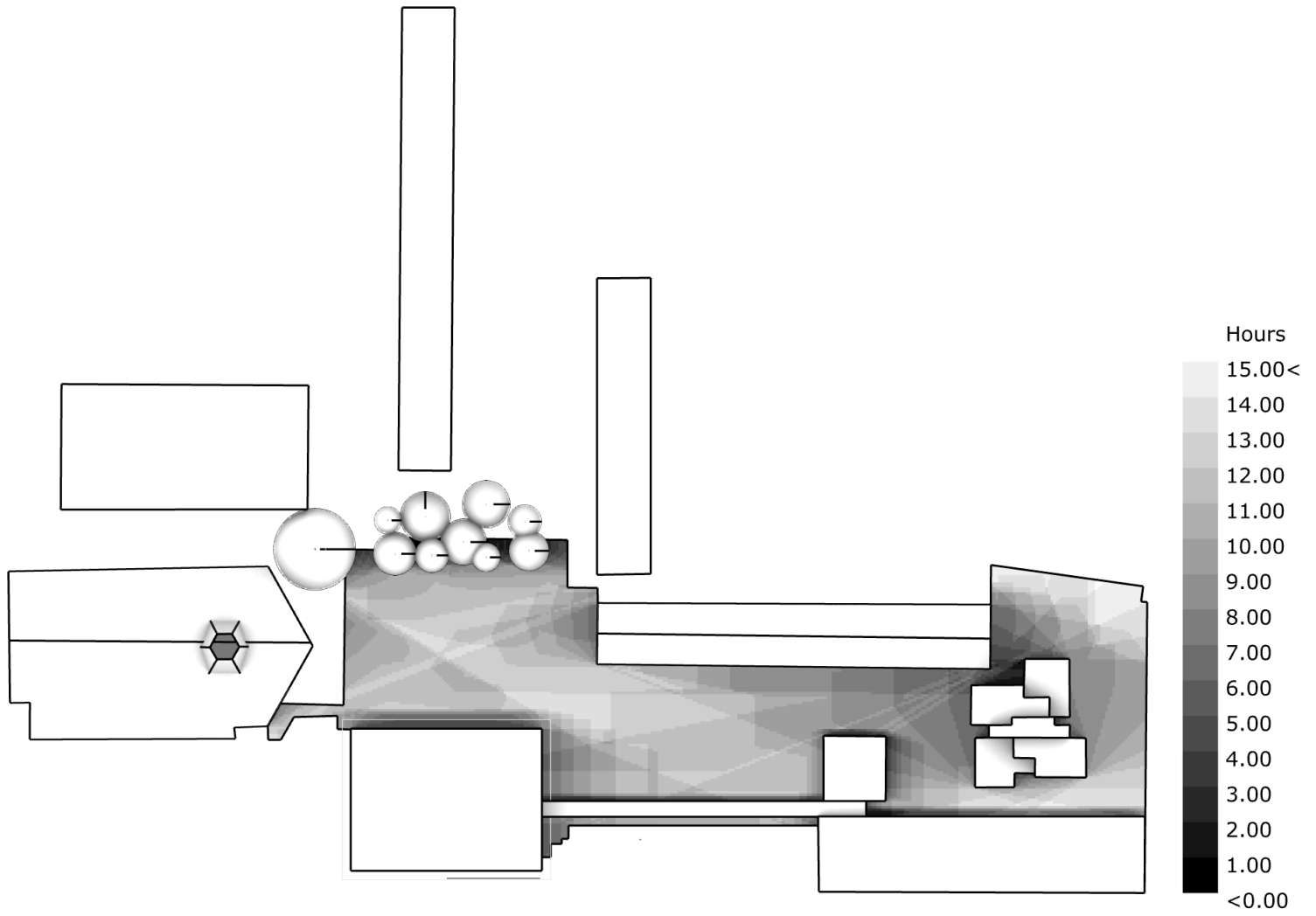
- 18.7
- 21.4
- 24.1
- 26.9
- 29.6
- 32.4
- 35.1
- 37.6
- 39.7



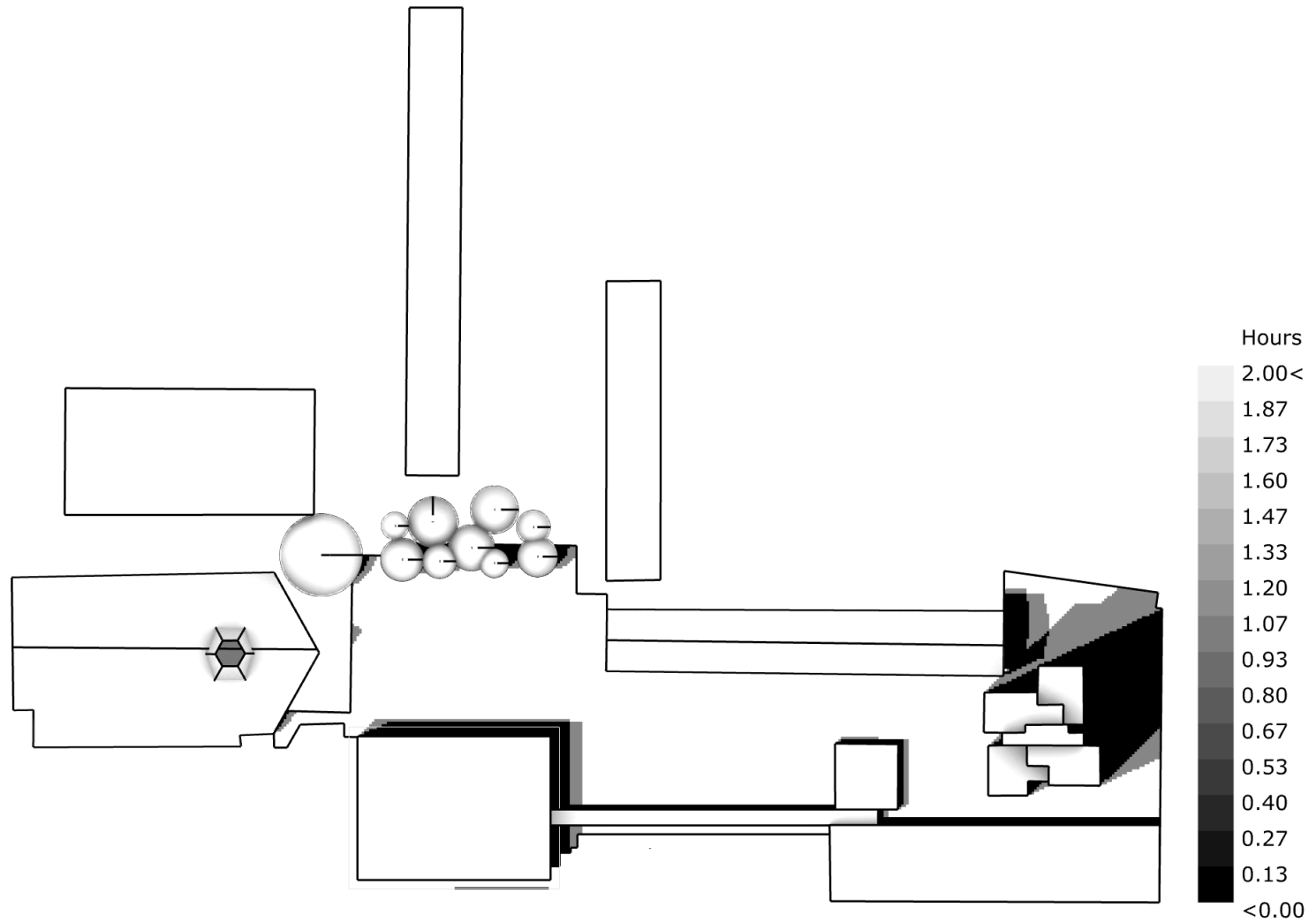
IDW_MV_23_FINAL_RITAGLIATO

- 0.01
- 0.297
- 0.495
- 0.692
- 0.89
- 1.09
- 1.28
- 1.47
- 1.62





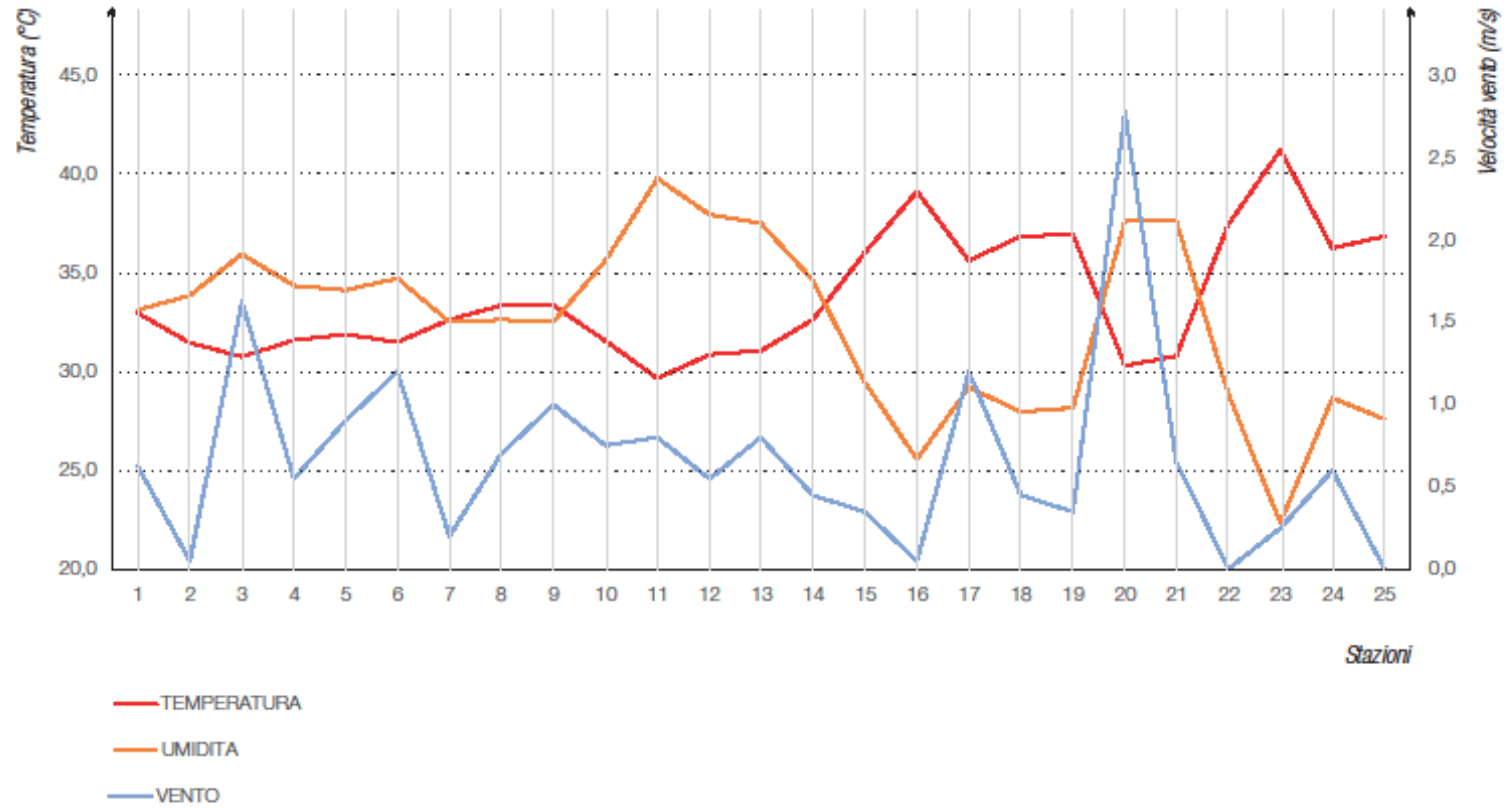
SunlightHours Analysis

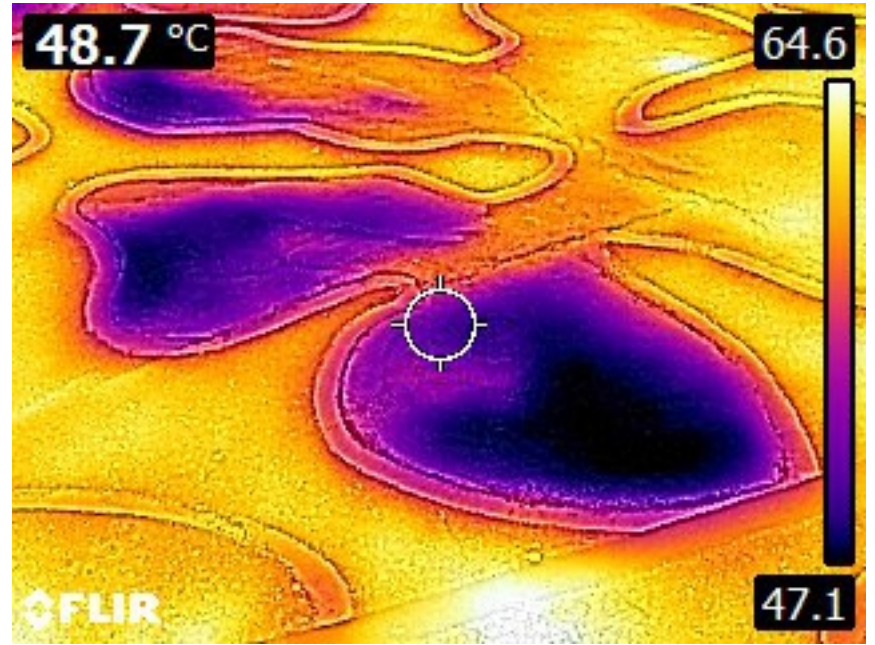


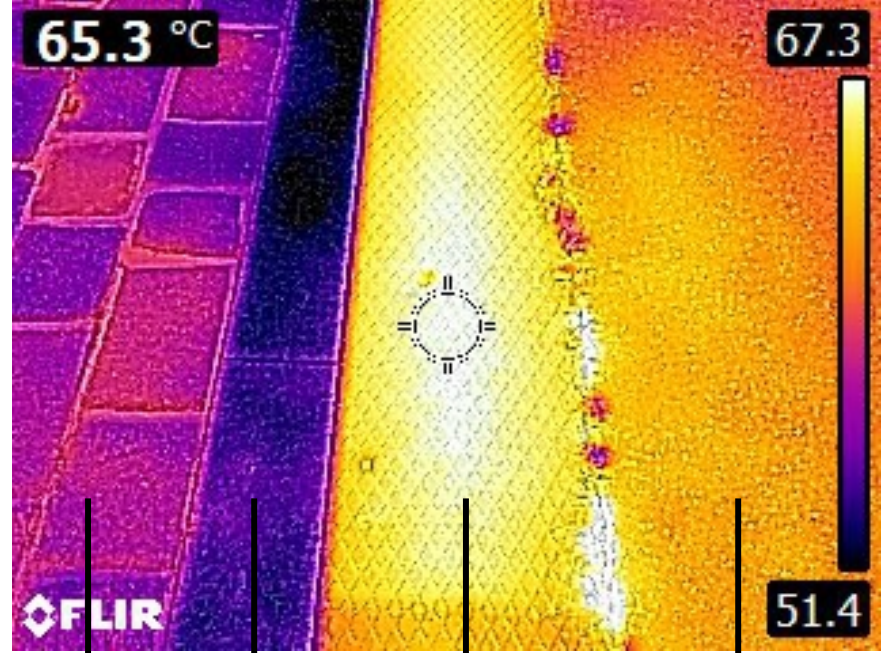
SunlightHours Analysis



Media misurazioni T2, T3







Porfido

Granito

Metallo

Asfalto

